



**WESTERDIJK**  
FUNGALBIO  
DIVERSITY  
INSTITUTE  
**DIRECTOR**



## CONTENTS

### 3 Westerdijk Fungal Biodiversity Institute

- ~ About
- ~ History
- ~ Current mission, vision and strategy
- ~ Organisation

### 7 Profile Director

- ~ Job description
- ~ Candidate profile
- ~ Employer

- ~ Employment terms
- ~ Additional information
- ~ Application

### 10 About KNAW

- ~ Background
- ~ KNAW institutes

### 12 Living and working in the Netherlands

- ~ Dutch society
- ~ About Utrecht
- ~ Taxation



## WESTERDIJK FUNGAL BIODIVERSITY INSTITUTE

### ABOUT

The Westerdijk Fungal Biodiversity Institute (“WI”) is part of the Royal Netherlands Academy of Arts and Sciences (“KNAW”) and is centrally located in Utrecht, the Netherlands. We are a world-renowned microbial biological resource centre for living filamentous fungi, yeasts and bacteria.

We perform highly innovative and original mycological research that contributes to the discovery of fungal novelties, understanding fungal biodiversity and biology, and using fungi as solutions to societal challenges. Our unique high quality collection of living fungi and related metadata is highly utilized by public and private parties.

The main focus of WI is and will continue to be to *Explore, Study* and *Preserve* fungal biodiversity. We promote and apply the enormous potential of fungi in the application of solving the world’s biggest challenges.

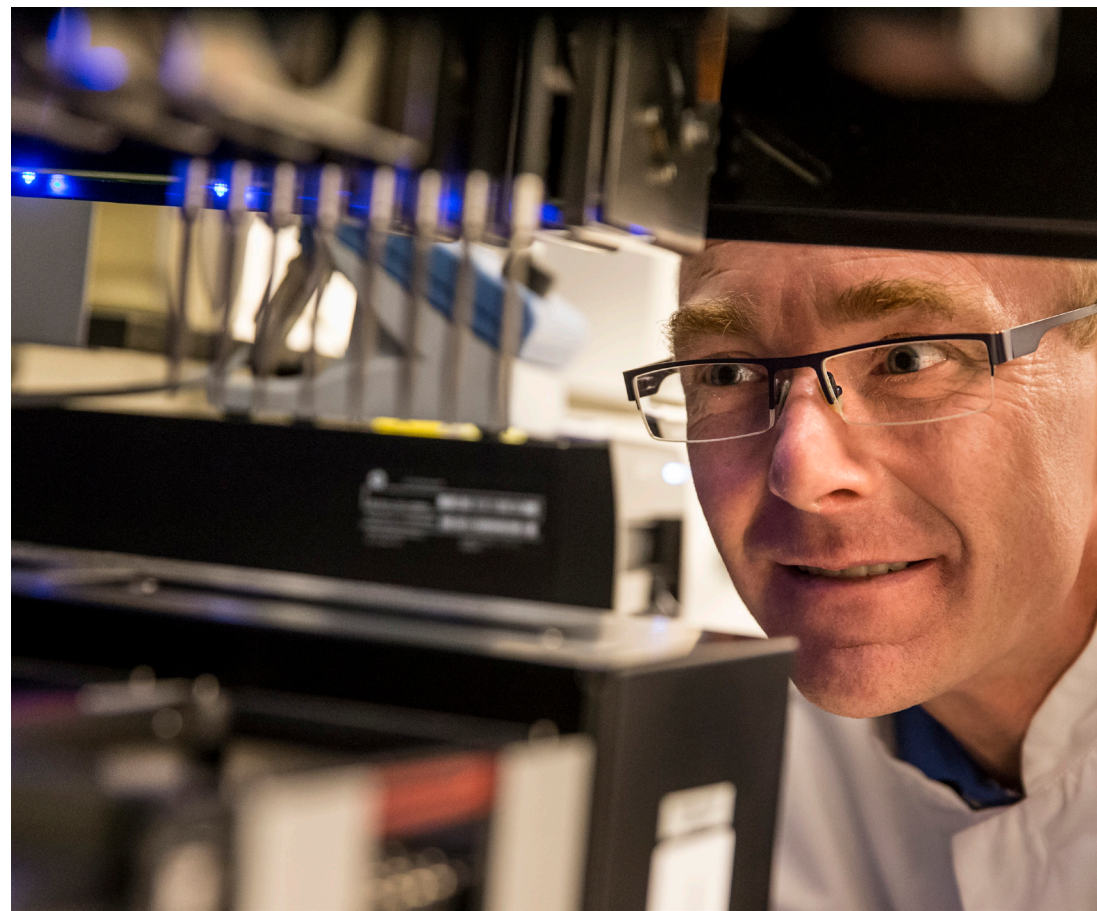
The institute’s research programs principally focus on the taxonomy and evolution of fungi as well as on functional aspects of fungal biology and ecology, increasingly making use of molecular and genomics approaches. There are circa 100 people working at the institute.

In our microbial biological resource centre (BRC), we now maintain over 100 000 strains of micro-organisms, representing a large percentage of the species in the fungal kingdom that have been cultured to date and an unchallenged diversity reference for mycological research. Preserving the organisms while maintaining their original characters is a perpetual challenge to technicians and scientists alike. This task is executed by highly skilled technicians and scientists, preserving the strains in the collection under the ISO 9001 norm using state of the art techniques e.g. lyophilization and cryopreservation.

The value of a BRC depends not only on the quality of the strains, but equally on the amount and accuracy of the data attached to them. The databases linked to our BRC give not only access to strain data, but also

to literature, while links to on-line information present elsewhere are provided.

WI is a centre of expertise, advising on mycological problems of a scientific, health-related or industrial nature. It offers various services including species identification, patent and safe deposit and courses. Research projects for third parties can be carried out on a strictly confidential base. The institute also publishes books and the journals *Studies in Mycology*, *Fungal Systematics and Evolution*, and *Persoonia*.



## WESTERDIJK FUNGAL BIODIVERSITY INSTITUTE

### HISTORY

The Centraalbureau voor Schimmelcultures (“CBS”), was established in 1904 as the foundation of a collection of fungal and algal cultures.

Between the two world wars CBS was financially supported by the Royal Netherlands Academy of Arts and Sciences (“KNAW”) and the institute has been part of the KNAW since 1968.

Prof. Dr. Went, who was responsible for founding the culture collection, asked Prof. Dr. Johanna Westerdijk to be the director of the institute in 1907.

Ms. A.L. van Beverwijk succeeded Prof. Westerdijk as director in 1959. The donation from Mr. O. van Vloten, a tea planter in the Dutch Indies who was keenly interested in fungi, allowed the institute to start building its own laboratory in 1962. This was accomplished at the instigation of Ms. van Beverwijk. The institute moved to the new building in Baarn in 1964.

Ms. van Beverwijk was succeeded by Prof. Dr. J.A. von Arx who directed the institute from 1963 on. The number of staff members increased and consequently more time could be devoted to scientific research. Each staff member became responsible for the investigation of incompletely known or poorly defined groups of fungi.

In 1987, Dr. Robert Kokke was appointed as interim director, to be succeeded in 1990 by Dr. Dirk van der Mei.

In December 2000, CBS moved to Utrecht Science Park where it was accommodated in a completely renovated building, previously occupied by the Hubrecht Institute. The entire staff and collection of the CBS yeast department housed at T.U. Delft also moved to Utrecht, followed by the bacterial collection NCCB, containing the wild-type collections of the T.U. Delft and the Phabagen collection of Utrecht University.

In July 2002, Prof. Dr. P.W. Crous was appointed as director to lead the institute in a challenging research future. At the same time, a new research group on Evolutionary Phytopathology was established.

In 2016, to accommodate the growth of existing research groups and to host a new research group on natural products, a new wing was added to the existing building. The facilities in Utrecht allow a firm base for growth and fruitful cooperation between Westerdijk Fungal Biodiversity Institute, the Hubrecht Institute, UMC-U and Utrecht University.

In 2017, CBS changed its name to “Westerdijk Fungal Biodiversity Institute”, in honour of Prof. Dr. Johanna Westerdijk, the first Director of the institute, and the first female professor appointed in the Netherlands (1917).



## WESTERDIJK FUNGAL BIODIVERSITY INSTITUTE

### CURRENT MISSION, VISION AND STRATEGY

#### Mission: Explore, Study and Preserve

The WI maintains the World's oldest, largest, and most genetically diverse biobank of living fungi. The institute is a centre of expertise for mycology, and does research in evolutionary biology, physiology, epidemiology, taxonomy, biotechnology and biodiversity of filamentous fungi and yeasts. It generates and shares scientific knowledge and addresses key societal questions in collaboration with other scientific institutions, social partners, and industries.

#### Vision

The WI aims to stay the World's leading institute and microbial biobank in mycology, and a public centre of expertise for filamentous fungi and yeasts, with high visibility and collaborations with public and private partners. Research focusses on strategic questions that are important in the three main themes, namely agriculture, health, and industry, making use of the broad expertise and experience that the institute is renowned for.

#### Strategy

The WI's strategy for accomplishing these aims is laid out in our Strategic Plan 2015–2020. This plan addresses:

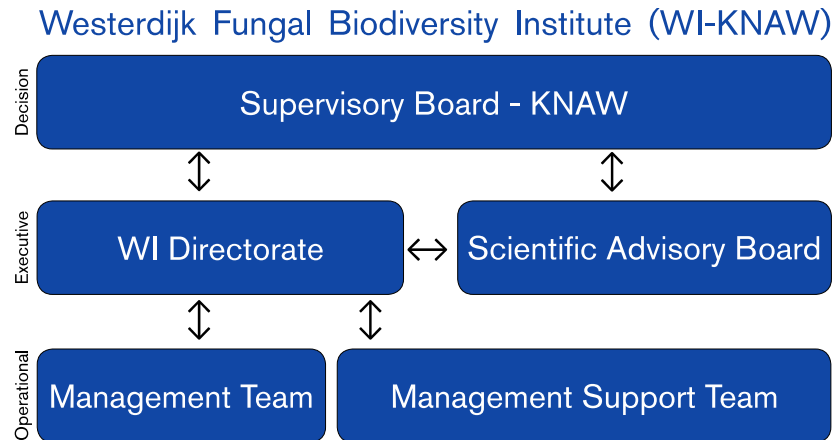
- ~ Performing high-quality and societal relevant mycological research in the areas of agriculture, industry, and health. Stimulating synergy between research groups, increasing brand awareness, and collaboration with external partners
- ~ Maintaining and actively expanding the World's most comprehensive and data-rich collection of fungal cultures and performing related high-quality research that adds value to the biobank
- ~ Having an outstanding output, among others also reflected in high-impact, high-quality publications

- ~ Distributing and making available as many fungal cultures and metadata as possible, in support of mycology
- ~ Expanding the national/international awareness of the role fungi play in society, e.g. via Citizen Science projects (plus social media), museum exhibits, symposia, and public engagement events
- ~ Appointing highly skilled researchers, technicians, and support staff, creating and maintaining state-of-the-art facilities and techniques, and providing an open academic working environment
- ~ Providing open access databases, journals, and books to facilitate and support mycology
- ~ Further developing the WI as an (inter)national mycological hub, by having special professorships at Dutch and international universities with mycology in their curriculum, organising the annual WI spring symposium, and playing an active and instrumental role in (inter)national research agendas and legal operational framework fora (like WFCC, ECCO, IMA, IUMS, ISHAM, EU-ABS Consultation Forum)
- ~ Further developing WI's role as an international breeding ground for new mycological talent: "the place to be" for young mycologists, allowing them to develop themselves to the full and move on to (inter)national top positions in science and society
- ~ Broadly and actively disseminating our mycological knowledge to the global scientific community, stakeholders, and citizens, including tailored-made projects for specific industries



# WESTERDIJK FUNGAL BIODIVERSITY INSTITUTE

## ORGANISATION



WI is managed by its Director who is advised by the Management Team (MT), consisting of the Director, the Managing Coordinator, the heads of the Research Groups and the heads of HR, Finance, IT and Services. The Director and MT are supervised by the Supervisory Board of KNAW and advised by the Scientific Advisory Board.

Other than the BRC (including database management), service unit and sales department, WI has three scientific themes: [Agricultural Mycology](#), [Medical Mycology](#), and [Industrial Mycology](#), each with two research groups.

### Agricultural Mycology

In agriculture, groups focus on identifying and combating fungal pathogens of food and fibre crops to enhance food safety and trade, and prevent food spoilage.

- ~ Evolutionary Phytopathology Research Group - Prof. Dr. Pedro W. Crous
- ~ Food and Indoor Mycology Research Group - Dr. Jos Houbraken

### Medical Mycology

In health, the focus is on rapid clinical fungal diagnostics, understanding the changing landscape of fungal infections, and resistance.

- ~ Yeast Research Group - Prof. Dr. Teun Boekhout
- ~ Medical Mycology Research Group - Dr. Ferry Hagen

### Industrial Mycology

The industry theme focuses on producing new materials, bioactive compounds, enzymes, and metabolites in fungal cell factories.

- ~ Fungal Physiology Research Group - Prof. Dr. ir. Ronald P. de Vries
- ~ Fungal Natural Products Research Group - Dr. Jérôme Collemare



## PROFILE DIRECTOR

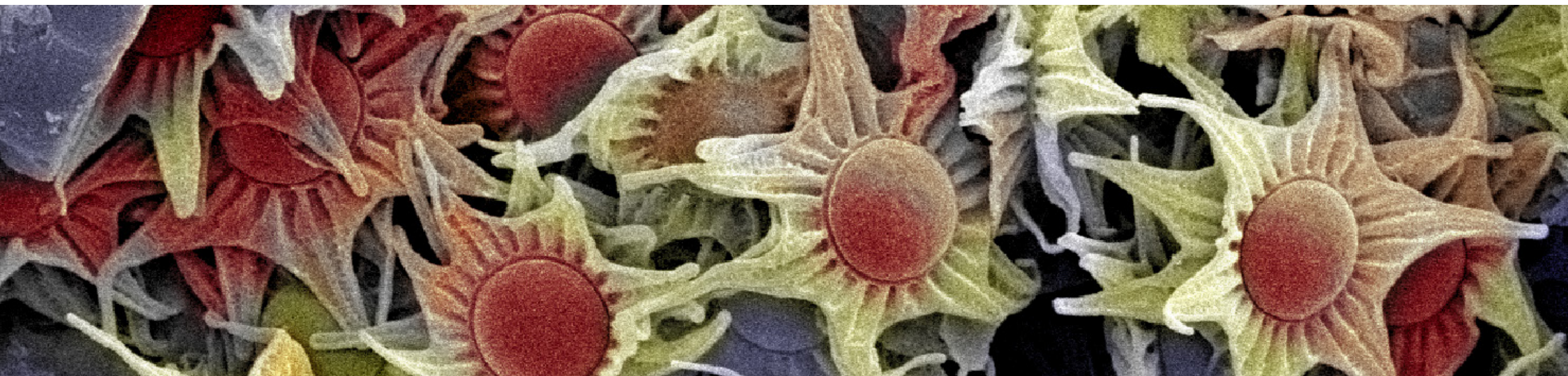
For the Westerdijk Fungal Biodiversity Institute, the Royal Netherlands Academy of Arts and Sciences (KNAW) is seeking an authoritative scientist in mycology with an affinity for biodiversity and taxonomy, a large national and international network, a broad outlook on science and strong management skills.

The Westerdijk Institute, an Academy research institute, manages a world-famous collection of living fungi, yeasts and bacteria and is a centre of expertise for mycology. Its research focuses on three priority areas: Agricultural Mycology, Industrial Mycology and Medical Mycology. In addition, the institute has two technical research groups: the Collection group and the Software & Databasing group.

The institute's researchers study fungal biodiversity in the widest possible sense. They develop and utilise a broad range of techniques for examining fungal taxonomy, biology, ecology and genetics and increasingly make use of fungal bioinformatics and genomics. The unique collection of more than 100,000 living strains of fungi puts the Westerdijk Institute at the top of the global rankings of mycology research institutes.

The institute serves as a centre of expertise and advises scientists, industry, government and the public on issues pertaining to fungi, yeasts and bacteria. It also organises courses on general mycology, medical mycology and mycology as it relates to food and the built environment. In addition to basic biodiversity research, it identifies microorganisms at the request of third parties and advises on problems caused by fungi and yeasts. Staff contribute data to MycoBank and the Dutch Species Register.

The Westerdijk Institute is one of the Academy's research institutes. It employs approximately 100 staff members, has eight research groups, and is located at Utrecht Science Park in Utrecht. Follow this link <https://wi.knaw.nl/page/Director> for more information about the Westerdijk Institute.



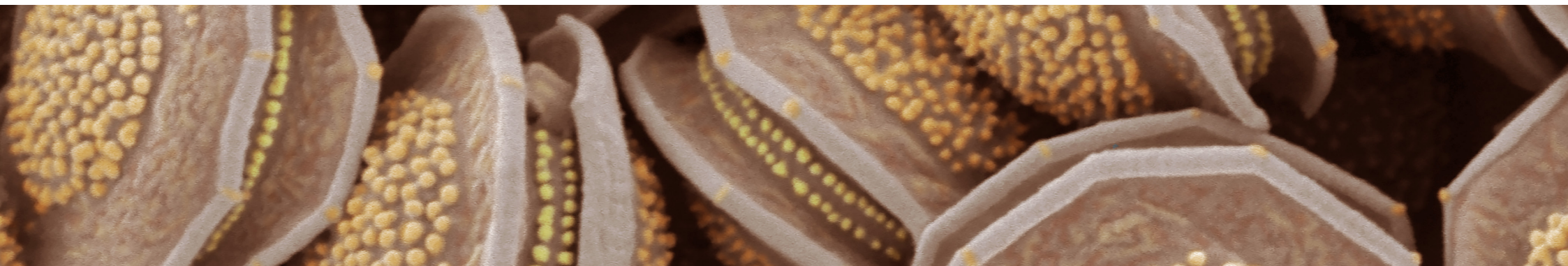
## JOB DESCRIPTION

- ~ As the director of the Westerdijk Institute, you will provide inspiring and unifying leadership and bear final responsibility for the institute's strategic direction and operational management, in line with the Academy's strategy. You will have the support of the Managing Coordinator.
- ~ Your scientific expertise will allow you to serve as a unifying force across the institute's research groups. In addition, you will head one of the institute's existing or future research groups.
- ~ You will develop a well-defined strategy with respect to the branding and future development of the Westerdijk Institute, identify important trends in science and society, both in the Netherlands and abroad, and respond effectively to these trends. Your task will be to ensure that the Westerdijk Institute remains a leading national and international institute, where talented scientists can flourish. You will consolidate and improve the international reputation of the collection.
- ~ You will play a key role in national and international networks and partnerships in the field of mycology and promote interdisciplinary cooperation between the institute and universities, other Academy institutes and institutes belonging to the Dutch Research Council (NWO), for example in the BiodiversityXL partnership and the PROMISE, NIEBA-ARISE and Future Food projects.
- ~ You will position the institute with bodies that fund research (including the EU and NWO), knowledge institutions, NGOs, government bodies and industry, and by doing so build new partnerships.
- ~ You will devote yourself to fostering scholarly communication and maximising the impact of the institute's research activities on society.

- ~ You will represent the Westerdijk Institute both within the Academy and in national and international bodies and in doing so promote the interests of both the institute and the Academy.

## CANDIDATE PROFILE

- ~ You are an authoritative and innovative scientist both in the Netherlands and abroad with fungi as the focus of your research. You have a large national and international network and are demonstrably able to use your network to forge strategic alliances and obtain research grants. You are open to public debate and committed to research integrity and scientific rigour. You are an expert in the field of fungal biodiversity and have an affinity for and experience with taxonomy and genomics and/or bioinformatics.
- ~ You possess proven leadership skills, you are inventive and engaged, and capable of acting as a unifying force. You advocate and promote an inspiring, safe, diverse and inclusive research environment.
- ~ You display integrity, you focus on getting results, and you are decisive. You have strong communication skills for both internal and external communication, you are sensitive to the human dimension and you are able to generate broad support.
- ~ You have an affinity for, an understanding of, and experience in finance and human resources management such that you can assume overall responsibility for the institute in these areas, with the support of the Managing Coordinator.
- ~ You have a good command of Dutch and English (written and spoken).



~ Foreign candidates should be prepared to acquire a passive and active command of Dutch and within a reasonable period of time.

## EMPLOYER

The Academy is a learned society of outstanding scientists and scholars, advises the Dutch government on research matters, and is responsible for ten national research institutes, one institute that delivers infrastructure for research, and one institute for advanced study. The Westerdijk Institute is one of the Academy's research institutes.

The Academy is committed to being a diverse and inclusive organisation and strives to set a good example in its leadership and management and to ensure a safe, honest and inclusive workplace culture.

## EMPLOYMENT TERMS

The employment contract with the Academy will be for an indefinite period. The appointment to the position of director will be for a period of five years with effect from 1 October 2022, with the intention of reappointment for a second and final term of five years. Depending on educational background and work experience, the person appointed will be remunerated at scale 16 (of the Collective Labour Agreement for Dutch Universities), including 8% holiday allowance and a year-end bonus of 8.3% of the annual salary. The Academy offers attractive fringe benefits and arrangements that facilitate a good work-life balance.

## ADDITIONAL INFORMATION

The Academy attaches great importance to a working environment where everyone feels welcome and valued, where individual talent is nurtured, and where development opportunities are paramount. Together, we aspire to an inclusive culture that embraces differences. We would therefore like to invite candidates whose background and experience will help us to achieve our goals. Where two or more applicants are equally qualified, preference will be given to the candidate who contributes most to diversity at the Academy.

For more information about this position, please contact Wilma Koning, Academy Director General, at [wilma.de.koning@knaw.nl](mailto:wilma.de.koning@knaw.nl).

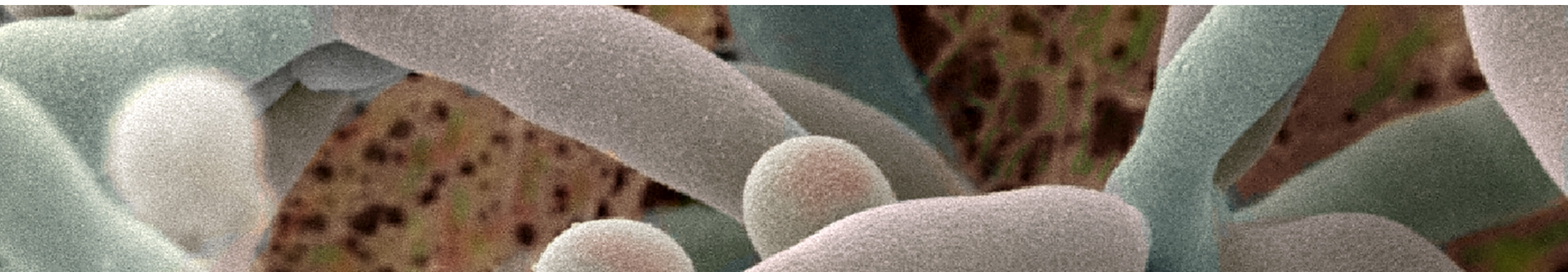
Westerdijk website: <https://wi.knaw.nl>; Academy website: [www.knaw.nl](http://www.knaw.nl).  
Work location: Uppsalalaan 8, 3584 CT Utrecht, Netherlands

The selection procedure may involve an assessment.

## APPLICATIONS

Please e-mail your letter of application with curriculum vitae to the Academy at [solliciteren@knaw.nl](mailto:solliciteren@knaw.nl) by the deadline, January 16, 2022, stating in the subject line: Director, Westerdijk Institute.

No soliciting based on this job advertisement.



## ABOUT KNAW

### BACKGROUND

#### For science and scholarship

The Royal Netherlands Academy of Arts and Sciences (“KNAW”) was founded in 1808 as an advisory body to the Dutch Government – a role that it continues to play today. The KNAW derives its authority from the quality of its members, who represent the full spectrum of scientific and scholarly endeavour and are selected on the basis of their achievements. It is also responsible for 13 internationally renowned institutes whose research and collections put them in the vanguard of Dutch science and scholarship.

#### Mission

As the forum, conscience, and voice of the arts and sciences in the Netherlands, the Academy promotes quality in science and scholarship and strives to ensure that Dutch scholars and scientists contribute to cultural, social and economic progress. As a research organisation, the KNAW is responsible for a group of outstanding national research institutes. It promotes innovation and knowledge valorisation within these institutes and encourages them to cooperate with one another and with university research groups.

#### Duties

The KNAW

- ~ Serves as a learned society representing the full spectrum of scientific and scholarly disciplines

- ~ Acts as a management body for national research institutes
- ~ Advises the Dutch Government on matters related to scientific pursuit

#### Organisation

The KNAW is both a learned society and an organisation of national research institutes. The KNAW Board consists of the President, two vice-presidents (one of which is also general secretary) and four board members q.q. domain chair. The Board defines the overall policy and budget. The Director General has overall responsibility for day-to-day management of the KNAW.

#### Working for the KNAW

Working for the KNAW means working at the very heart of science and scholarship. Most of the KNAW's employees work for one of its 13 research institutes. They either conduct research themselves or assist the researchers. The Academy adheres to the employment terms set out in the Collective Agreement for Universities in the Netherlands.

#### KNAW Bureau

The KNAW's research institutes and its learned society are assisted by the KNAW Bureau, which has a staff of approximately 130. The KNAW Bureau is located in the Trippenhuis Building in Amsterdam.



KNAW President  
Ineke Sluiter

## ABOUT KNAW

### KNAW INSTITUTES

The KNAW is responsible for 13 research institutes that together employ about 1 300 staff. The institutes are active in the humanities, the social sciences and the life sciences. The KNAW institutes play a leading role in Dutch and international research. They serve as national centres of expertise and manage and provide access to collections and/or research facilities, many of which are world-famous. The institutes investigate a wide variety of subjects, ranging from the history of the Second World War to stem cells, from the phenomenon of sleep to the Frisian language, and from the Great Tit population to medieval manuscripts. The Academy institutes play a leading role in Dutch research. They serve as national centres of expertise, manage unique infrastructures, and provide access to world-famous collections. Ten institutes are National Research Institutes, and three institutes provide research infrastructure.

#### National research institutes

- ~ Hubrecht Institute for Developmental Biology and Stem Cell Research
- ~ Huygens ING
- ~ International Institute of Social History (IISH)
- ~ Royal Netherlands Institute of Southeast Asian and Caribbean Studies (KITLV)
- ~ Meertens Institute
- ~ NIOD Institute for War, Holocaust and Genocide studies (NIOD)
- ~ Netherlands Interdisciplinary Demographic Institute (NIDI)
- ~ Netherlands Institute of Ecology (NIOO)
- ~ Netherlands Institute for Neuroscience (NIN)
- ~ Westerdijk Fungal Biodiversity Institute

#### Research infrastructure

- ~ Data Archiving and Networked Services (DANS)
- ~ Spinoza Centre for Neuroimaging
- ~ Netherlands Institute for Advanced Study in the Humanities and Social Sciences (NIAS)

#### Affiliated institutes

The KNAW has an alliance with two institutes. The Rathenau Institute has its own board, appointed by the Dutch Minister of Education, Culture and Science. The Fryske Akademy is an independent foundation.



KNAW Trippenhuis - Amsterdam

## LIVING AND WORKING IN THE NETHERLANDS

The Netherlands is a constitutional monarchy with a parliamentary system. Amsterdam is the capital of the Netherlands according to the Constitution of the Netherlands, although the seat of government has been situated in The Hague since 1588, along with the Supreme Court and the Council of State. Our country hosts the International Court of Justice in The Hague and is a founding member of the NATO and EU.

The Netherlands covers an area of 41 500 square kilometres. Even so, it is the 6<sup>th</sup> largest exporter and investor in the world. This is partly thanks to its central location in Western Europe.

Moving to the Netherlands may be a big step for any person. However, it will broaden your experience and provide the perfect opportunity to take your career forward. The Netherlands has excellent social and cultural facilities for you to enjoy.

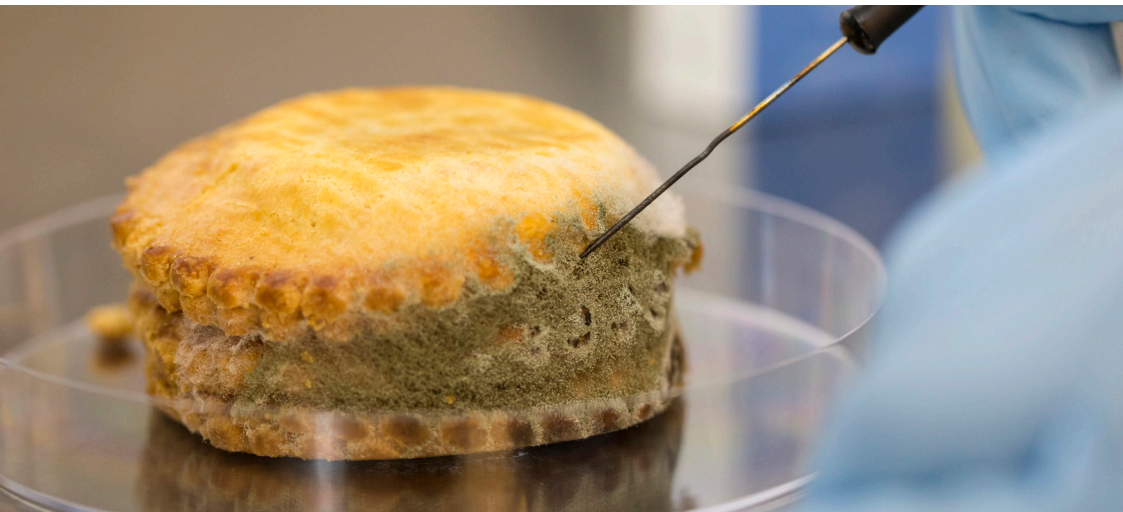
### DUTCH SOCIETY

The Netherlands is a small country with a limited internal market, consequently the Dutch look across their borders for markets. They started out as worldwide maritime traders in the 16<sup>th</sup> century and today they are still significant players in the global economy. 'The Netherlands' means 'Low Lands'; a large part of the country is below sea level. With over 17 million inhabitants, the Netherlands is one of the most densely populated countries in Europe. The Netherlands is a democracy with a tolerant, open society.

The Dutch tend to have an international outlook on life. The majority of the population speaks English, regularly travels abroad and is accustomed

to having neighbours who may originally come from another country. It is easy to get by in the Netherlands without speaking Dutch since most people have at least a basic knowledge of English and are usually more than happy to use it.

The United Nation has ranked the Netherlands as the 5<sup>th</sup> happiest nation on Earth, with the happiest children (as ranked by UNICEF). Its happiness levels have barely changed (we're talking less than 0.03 percent) between 2005 and 2020. Benefits of living and working in the Netherlands include a satisfying work-life balance, high standards of living, an excellent education and health system, and a strong sense of community.



## LIVING AND WORKING IN THE NETHERLANDS

### ABOUT UTRECHT

Utrecht is both the name of the Province and the Province capital city, which is the fourth largest city of the Netherlands.

The city is host to Utrecht University, the largest university in the Netherlands. Due to its central position within the country, it is an important transport hub for both rail and road transport. The city of Utrecht is a lively student city in the heart of the Netherlands and considered the 'gateway to Europe'. Utrecht is an inspiring city that nurtures talent and creativity – a young and dynamic city that both offers a myriad of opportunities to those ready to grasp them – a large and expanding city, yet characterised by a personal, human scale.

Utrecht has a rich history of almost 2 000 years and an architectural legacy that includes both ancient and thoroughly modern buildings. Utrecht's old city centre has remained largely intact, with its picturesque canals and elegant parks, cafes and cultural venues. The impressive Dom tower rises high above the city, surrounded below by international restaurants, cinemas, clubs and boutiques that give Utrecht its unique dynamic atmosphere.

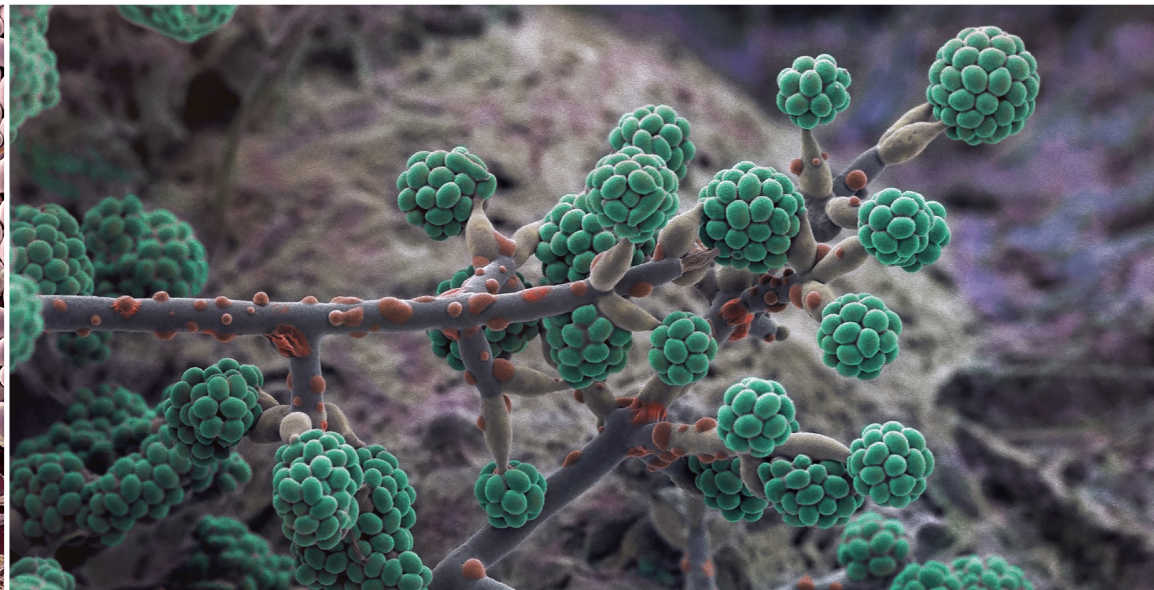
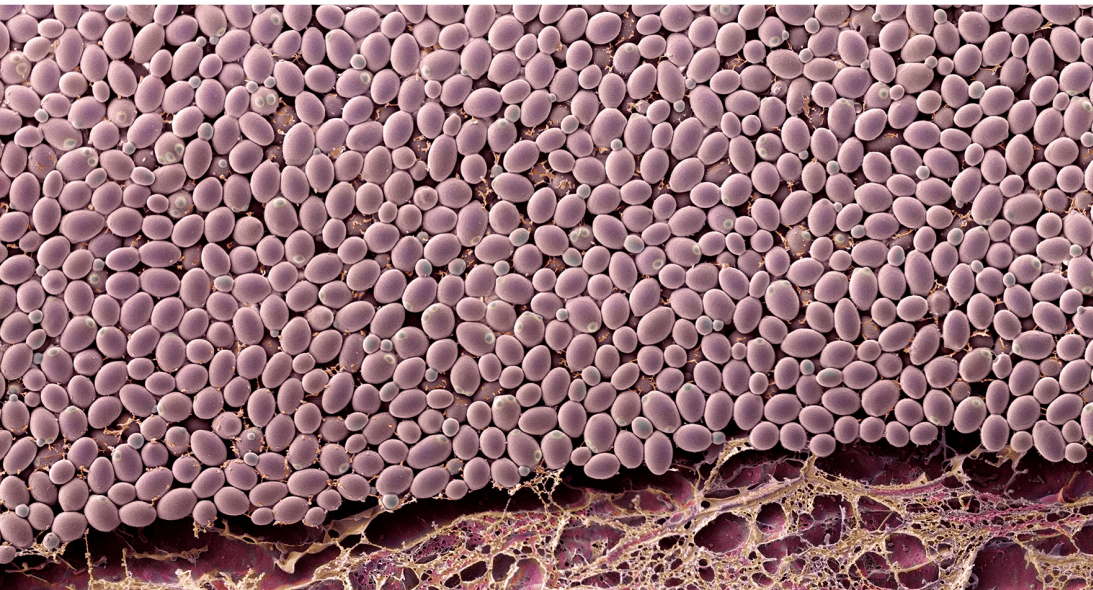
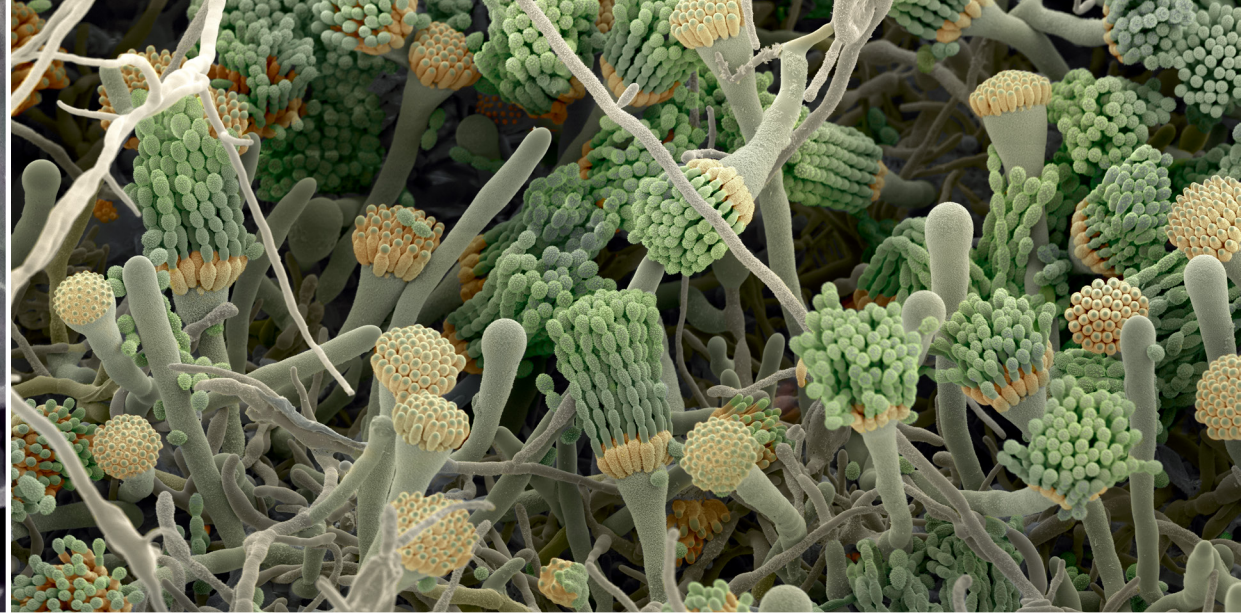
#### Utrecht Science Park

The Westerdijk Fungal Biodiversity Institute is located at the Utrecht Science Park (USP). USP brings competence from business, industry and academia together in order to design and create healthier, safer and more sustainable cities for today and for subsequent generations. USP provides a vibrant, dynamic and exciting place to work, to study and to interact. USP hosts > 130 companies on over 322 ha; The University Medical Center Utrecht (UMC-U) and a greater part of Utrecht University are located at USP too. The USP is accessible by tram and bus and can be reached from Amsterdam Airport Schiphol in 45 minutes.

### TAXATION

Certain categories of international staff are eligible for a tax exemption of approximately thirty per cent (the so-called 30% tax ruling), for up to five years, on their gross salary to compensate for the extra costs they incur in living abroad, such as having to rent (temporary) accommodation.





**WESTERDIJK**  
FUNGAL BIO  
DIVERSITY  
INSTITUTE

Westerdijk Fungal Biodiversity Institute  
Uppsalalaan 8  
3584 CT Utrecht, the Netherlands



Photo credits: Merlijn Doornik | Thijs  
Roomans | Jan Dijksterhuis